



# UPSKILL YOUR WORKFORCE

## CRAFT TRAINING SERIES

### **CARPENTRY I:**

6-month training series filled with theory and hands-on instruction for entry-level laborers. Build your skills on the following: building materials, fasteners and adhesives, hand and power tools, construction drawings, floor and wall systems, ceiling joist and roof framing, basic stair layout, and building envelope systems.

### **CARPENTRY II:**

6-month training series includes hands-on learning and theory about: commercial drawings, roofing applications, thermal and moisture protection, exterior finishing, cold-formed steel framing, drywall installation and finishing, door and door hardware, suspended ceilings, window, door, floor, and ceiling trim, and cabinet installation.

### **CARPENTRY III:**

3-month training series filled with theory and hands-on instruction of properties of concrete, rigging equipment, rigging practices, trenching and excavating, reinforcing concrete, handling and placing concrete, foundations and slab-on-grade, vertical formwork, horizontal formwork, tilt-up wall systems, and safety components.



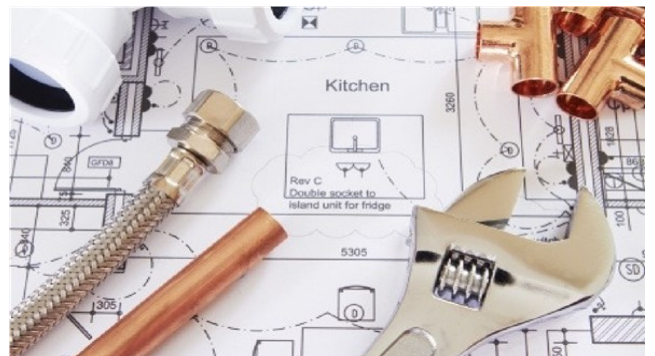
### **ELECTRICAL:**

12-week training series filled with theory and hands-on instruction for entry-level electricians. Build your skills on the following: electrical trade, electrical safety, electrical circuits, the NEC, device boxes, hand bending, raceways and fittings, conductors and cables, basic electrical construction drawings, residential electrical services, and electrical test equipment.



### **PLUMBING:**

Training series filled with theory and hands-on instruction for entry-level plumbers. Build your skills on the following: plumbing profession, plumbing safety, tools in the plumbing trade, plumbing math and drawings, plastic, copper, cast-iron, and carbon steel pipe and fittings, plumbing fixtures, DWV System, and water distribution systems.



**For more information, please contact:**

**Dr. Marianne Hazel, [mhazel@abccentralpa.org](mailto:mhazel@abccentralpa.org) or 814.353.1999**